



# Bushy Creek Wind Farm

Project  
Fact Sheet

1

November  
2020

**Tilt Renewables and NewEn are co-developing the Bushy Creek Wind Farm in Western Victoria, approximately 6km north-west of Chatsworth and 34km north-west of Mortlake, in the south-eastern corner of the Southern Grampians Shire.**

## **Why Bushy Creek?**

The Project site has been chosen for a variety of reasons:

- the wind resource
- the geographic position – being away from populated areas, major roads or highways
- the ability to be using an existing transmission network from the Salt Creek Wind Farm.

## **How will the Project connect to the grid?**

The proposed Bushy Creek Wind Farm will connect to the National Electricity Market (NEM) network via a new approximately 27km long 66kV transmission line to the existing on-site substation located at Tilt Renewables' Salt Creek Wind Farm (SCWF), near Woorndoo, and from there via the existing transmission line to the connection point at the Terang Terminal Station.

## **How far has the Project progressed?**

Tilt Renewables and NewEn are in the early stages of the development phase of the Bushy Creek Wind Farm.

Field surveys and assessments are underway to establish the indicative layout of the wind farm and the alignment of the transmission line.

## **Project Information**

### **Project Status:**

In Development

### **Maximum capacity:**

Up to 150 MW (proposed)

### **Location:**

6km north-west of Chatsworth, Victoria

**Turbines:** Up to 24

**Blade Tip Height:** Up to 250m

**Transmission Connection:** 27km of 66kV transmission line

## **When will we connect with the community?**

We will make arrangements to meet the community once we have received and reviewed the field reports and environmental assessments which will inform the Project, and of which we would like your feedback on.

It is our intention to arrange community information sessions to share the findings of these reports, consult with the community to obtain feedback on the Project and to provide answers to questions that may arise.

Tilt Renewables and NewEn are undertaking initial field surveys and assessments required to establish the indicative layout of the wind farm and the alignment of the transmission line.

These detailed site-specific investigations enable assessment of the Project and optimisation of the wind turbine layout to ensure potential impacts are minimised.

### What assessments are underway?

During this phase, consideration is given to the various environmental aspects of development such as, but not limited to:

- Birds and bats
- Noise
- Cultural heritage
- Shadow flicker
- Brolga
- Flora
- Visual impacts

### Will assessments be conducted for the transmission line?

The environmental assessments will provide essential inputs to the indicative design of the Project in order to minimise any negative social or environmental impacts. Additionally, they will help to form the basis for the relevant planning and environmental approvals. We are working closely with AusNet Services to investigate the most suitable transmission line corridor with close consideration to the current landscape, ecology and vegetation.

It is anticipated that the transmission line route will extend east from the southern end of the Project site approximately 27km to the Salt Creek Wind Farm on-site substation. It has been selected to avoid any poles within road reserves, to minimise potential impacts to native vegetation, sensitive ecological areas and with consideration of land use (e.g. dwellings) across the length of the transmission line.

### When could construction start?

It is anticipated that construction of the Project could begin in 2022.

## Project Benefits

The proposed Bushy Creek Wind Farm will support the delivery of economic development objectives within three local government areas, the Southern Grampians Shire, the Ararat Rural City Shire and the Moyne Shire.

There will be a range of environmental, economic and social benefits including but not limited to:



Create an opportunity for **local employment** during construction and full-time staff during the Project's lifespan (~30 years).



Enough **electricity generation** to power up to 30,000 homes each year, or the equivalent of taking up to 53,300 cars off the road.



**Assist Victoria to meet its renewable energy targets** established under the state's Renewable Energy Action Plan

- Contribute to the Victorian Government's legislated VRET targets of 25 percent by 2020, 40 percent by 2025 and 50 percent by 2030
- Play a role in increasing energy security by contributing to a more diverse energy mix.
- Significant local and regional economic benefits
- Procurement of local goods and services



The development of a **Neighbour Agreement Program** and a **Benefit Sharing Plan** including a significant annual contribution of funds through the establishment of a community investment fund to support local initiatives, clubs, associations and needs in the region.



**Secure income stream for farmers** and their community.

## Employment

A Wind Farm brings many direct opportunities for employment to the region during both the construction phase and ongoing operations once the Wind Farm is commissioned.

The Bushy Creek Wind Farm will create an opportunity for local employment during construction and full-time staff during its lifespan.

Flow on employment benefits are also achieved as the Project will bring demand for local business services and consumer goods. Most regions have a range of businesses that will provide services to a wind farm project.

These include:

- Electricians
- Machine operators
- Quarries
- Fencing contractors
- Accommodation providers and hotels
- Transport operators
- General labourers
- Concrete businesses
- Food and catering outlets



To register interest in providing goods or services for the Bushy Creek Wind Farm project please visit [www.bushycreekwindfarm.com](http://www.bushycreekwindfarm.com)

## Community

Tilt Renewables and NewEn are committed to taking a flexible approach to consultation that will seek to understand the communication and consultation needs of the community. We are committed to:



**Providing opportunities** for the community and stakeholders to ask questions, provide feedback and ideas, and participate in decision making



Maintaining an **open and honest dialogue** with all stakeholders



Building **strong connections** with the community



Providing **timely responses and feedback** to the community's concerns, with the intention of using this feedback to positively influence the development of the Project where possible.

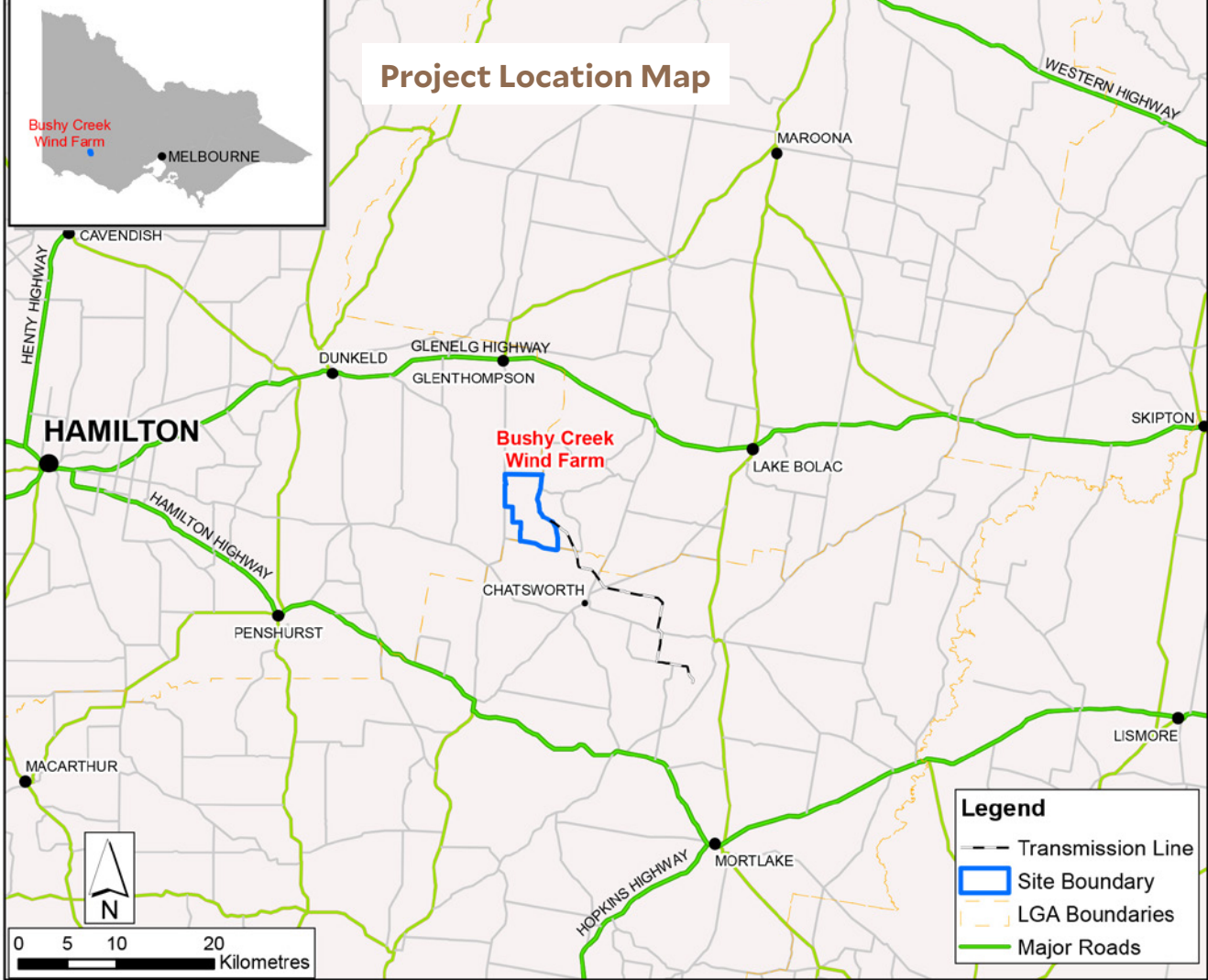


Enhancing community **acceptance and trust**

If you have any concerns or believe you can provide local insight into matters which we should address through the development of the project don't hesitate to contact us.







## Benefit Sharing

Tilt Renewables and NewEn are committed to enhancing its host communities by offering community benefits for all of our projects, including the Bushy Creek Wind Farm.

We will work with the community to inform an appropriate Benefit Sharing Plan to ensure any funding is distributed in a way that addresses key social, economic and environmental needs in the region, and that is sustainable and supported by the community.

## Community Fund

As part of the development of a Benefit Sharing Program for the Project, the landholders, Tilt Renewables and NewEn are committed to developing a community investment fund, run by a community-led group, to support local initiatives, clubs, associations and needs in the region.

The community fund will be developed when construction of the Project commences and will operate for the life of the wind farm. Further information relating to benefit sharing will be communicated progressively.

## Neighbour Agreement Program

Additionally, there will be a specific Neighbour Agreement Program associated with the Bushy Creek Wind Farm. Consultation on this has commenced and it will be implemented following construction.

Tilt Renewables and NewEn are committed to providing a Neighbour Agreement Program with the objective of engaging with residents within 2km of a turbine.

## Subscribe to the newsletter

Newsletters are an important part of Tilt Renewable and New En's community engagement and will increase in frequency as the Project develops.

Visit [www.bushycreekwindfarm.com](http://www.bushycreekwindfarm.com) to subscribe to the newsletter and stay up to date.

## Get in touch.

If you have any queries about the Project, the benefit sharing program or possible business and employment opportunities, please do not hesitate to contact us:

**Web:** [www.bushycreekwindfarm.com](http://www.bushycreekwindfarm.com) | **Phone:** 1800 WE TILT (938 458)

**Email:** [bushycreekwindfarm@tiltrenewables.com](mailto:bushycreekwindfarm@tiltrenewables.com)

**Postal Address:** PO Box 16080 Collins St West, Melbourne Vic 8007

